

AIR DISTRIBUTION
PRODUCTS

ADVANCING THE SCIENCE OF AIR DISTRIBUTION




FINISHES

03

WOOD GRAINS

Rethink what air management systems can be.
Revise your notion of functionality.
Redefine your comfort zone.™

An abstract graphic consisting of numerous thin, overlapping, wavy lines that create a sense of motion and depth. The lines are light gray and originate from the bottom right corner, extending towards the center of the page.

Comfort, Redefined.

Since 1946, Titus has focused on technologically advanced products that create the highest degree of comfort.

We've consistently led the industry by breaking the barriers of expectation and convention when it comes to technology. We've redefined how technology drives, influences and supports air management. And by being first to market with the most innovative approaches to air distribution, we're proud to say that the marketplace has taken notice, and is counting on us to lead the way into the next decade. A challenge we're more than happy to accommodate.

Titus has raised the bar on design, proving that functional can also be beautiful. And we've redefined what it means to be energy efficient, with a collection of smart technology products that optimize the use of natural resources.

Titus has also redefined what it means to work with an air management products partner. We pride ourselves on listening and responding so that we can not only meet expectations, but also exceed them. Service has been, and will always be, our main focus at Titus. And, it's why so many of our customers keep coming back.

Welcome to your new comfort zone. It starts here.



Overview

The Elegance of Wood Meets the Durability of Aluminum

Wood has long been the symbol of sophistication and cultivated beauty in furniture, fixtures, and architectural accoutrements. It can bring a unique warmth and beauty to any space.

Aluminum has been a tried and true element of air distribution, because of its flexibility, sturdiness, and the fact that it is very light weight.

These two ingredients can now be combined to create a truly singular aesthetic in our industry. The process is called sublimation.

PREPARATION AND COATING

First, the raw aluminum surface receives a traditional pretreatment of a chemical conversion, creating a thin

layer of amorphous oxide with coating. Electrostatic guns then apply a 2.5 mils layer of nonhazardous powder paint. The polymerization is done with a 400°F temperature for 20 minutes. The base coat ensures adequate hardness of the final product, and protects the aluminum from light, weather, abrasion, corrosion and humidity.

DECORATION

Then, a preprinted film transfer with organic photosensitive pigments and cellulose resin is completely wrapped around the product. The profile is positioned on the surface of a movable trolley, and air is removed through a vacuum suction system. The result is a perfect thermoprint. The trolley is then placed in a special oven, where the decoration is effected, turning the ink pigments from solid into gas and back to solid inside the paint layer. After cooling, the film is removed. Combined with other breakthrough technologies we apply to the endeavor, this process accounts for why our system is a global leader in color coating quality.



WOOD GRAIN FINISHES

Additionally, this process produces a textured finish for most wood grain choices, which results in more than 30 new finish options for Titus.

Titus Products with Wood grain Availability

- » Grilles & Diffusers
- » Chilled Beams
- » Displacement Ventilation
- » UnderFloor Air Distribution (UFAD)
- » Fan Coils



LEED & Green Building

As LEED and GREEN continue to permeate the commercial building industry, building owners, architects and engineers are looking for new and environmentally responsible solutions for everyday building needs without sacrificing performance or aesthetics. Titus' wood grains finishes offer an appealing substitute for wood and natural stone without harming the environment. Wood grains finishes allow for conservation of our natural resources while also offering a durable cosmetic alternative to conventional finishes with low-to-no VOCs.

THE BENEFITS

This dye sublimation process provides a finish that realistically resembles wood and stone, and is durable enough to be used in high traffic architectural applications. In spaces where wood floors, ceilings or paneling are used, and architects would rather not see the required HVAC equipment, there are only a few options available such as using borderless installation methods, or paint and veneers which chip easily. The Titus wood grains finishes are so real and natural looking, you have to touch them to recognize the difference; and durable enough to be used in any architectural application.

Unlike natural wood, Titus' wood grains finishes are easy to clean and do not require the constant upkeep as wood products. They are available in either a smooth gloss or textured finish and will not deteriorate due to moisture, temperature extremes or corrosion. And of course you will never have to worry about termites. They will give you the look of high end wood grains, marbles, and granites with the durability of powder coating.

Additionally, wood grains finishes offer high resistance toward all atmospheric agents and are resistant to heat, acids, humidity, salt, detergents and UV. All of the powders used are made in a TGIC free super durable formulation and meet the performance requirements listed in AAMA 2603 and AAMA 2604-2.

As the architectural industry searches for alternative materials to meet the growing demand for LEED and GREEN builds, Titus is proud to say that we are the first commercial HVAC company to bring this cutting edge technology to the U.S. market.

Redefine your HVAC aesthetics with high-performance metal products that look like wood and stone. There is really no limit to what you can create when you redefine your comfort zone.

Note: [Wood grain finish options](#) can be specified on several Titus products; contact Titus or our sales representatives for specific model availability

Wood grain finishes may vary slightly from the sample images shown. Presently, they are available in textured finishes only - please contact us or your local Titus representative for a wood grain sample chip or ring.

LEED & GREEN BUILDING



500 Series Finishes



504
Walnut Textured



508
American Nut Textured



510
Medium Grain Textured



512
Wide Grain Textured



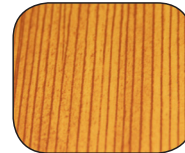
514
Knotty Pine Textured



518
Maple Textured



522
Oak Textured



532
Douglas Textured



534
Mahogany 2507 Textured



544
Fine Wenge Textured



589
Rustic Cherry



591
Fonthill Textured



597
Clipper Teak Textured



599
Barnwood Textured



500 SERIES FINISHES

Wood grain finishes may vary slightly from the samples shown. Presently, they are available in textured finishes only - please contact your local Titus representative for a wood grain sample chip or ring.



600 Series Finishes



601
Swamp Cypress Textured



603
English Walnut Textured



604
Lighter Maple Textured



605
Mediterranean Textured



606
Dark Natural Wal. Textured



607
Cinnamon Red Textured



600 SERIES FINISHES

Wood grain finishes may vary slightly from the samples shown. Presently, they are available in textured finishes only - please contact your local Titus representative for a wood grain sample chip or ring.



700 Series Finishes



701
Black Textured



703
Satin Black



704
Semi Gloss Black



705
Gloss Black



706
Storm Gray



707
Ultra Chrome



708
Patrician Bronze



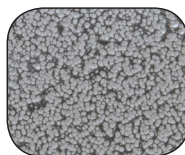
709
Oil Rubbed Bronze



710
Sparkle Silver



711
Stardust Silver



712
Silver Hammetone



713
Exterior Copper Vein



714
Bronze Card Ext. Silver Vein



700 SERIES FINISHES

Wood grain finishes may vary slightly from the samples shown. Presently, they are available in textured finishes only - please contact your local Titus representative for a wood grain sample chip or ring.

Notes

Notes

AIR DISTRIBUTION
PRODUCTS

ADVANCING THE SCIENCE OF AIR DISTRIBUTION



605 Shiloh Rd.
Plano, Texas 75074
(ofc): 972.212.4800
(fax): 972.212.4884
(web): www.titus-hvac.com